



Academic Membership



southwestnuclearhub.ac.uk

Academic Membership Benefits

ACADEMIC



The South West Nuclear Hub is helping to realise the zero-carbon economy of the future. Our alliance of academic, industrial and governmental institutions in the South West is pursuing research, innovation and skills in support of nuclear energy for electricity and other high-value products such as heat and hydrogen.

Benefits are aligned to our four strategic pillars:

Research

ENHANCED FUNDING

- Identification & leverage of research investment (inc. access to new sources in public sector, industrial, international)
- Galvanising consortia behind 'common interest' subjects to increase success

INCREASED IMPACT

- Strategic programme management to ensure outputs linked to specific industry challenges and hub regional technology development pipeline
- Effective consortia curation, including new and established capability from academic, industrial, government and SME partners

EXPERT ACCESS

- Dedicated liaison and expert coordination of funding proposals/research projects
- Intelligence and facilitated access to academic subject matter expertise and research facilities

INFLUENCE

- Propose and participate in projects and workshops on specific challenges.

Innovation

ACCESS TO EXPERTISE

- Introductions to industrial and associate members - steer and influence R&D
- Introductions to Innovation network members - facilitate innovation and technology transfer

Engagement

INCREASED IMPACT

- Communications and outreach expertise to promote research outcomes and impact deliverables

HUB ALLIANCE ACCESS

- Portal to new academic expertise, the nuclear sector and beyond e.g. SMEs & innovative players
- David Smith Building - focal point for nuclear research and teaching, possibility for collaboration, co-location, seminars and conferences

PROMOTION

- Collaborative communications programme - co-ordinated activities to increase public awareness of STEM and nuclear issues
- Unique platform deepening collaboration with industry & government

INFLUENCE

- Government nuclear sector policy - research investment

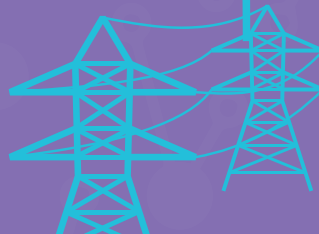
People

FELLOWSHIPS

- Support from industry for fellowship applications

SKILLS DEVELOPMENT

- Help to secure visiting status, joint appointments and knowledge exchange secondments into and out of industry
- Improve student experience on STEM courses - industry projects, nuclear careers days, bursaries



Membership of the South West Nuclear Hub



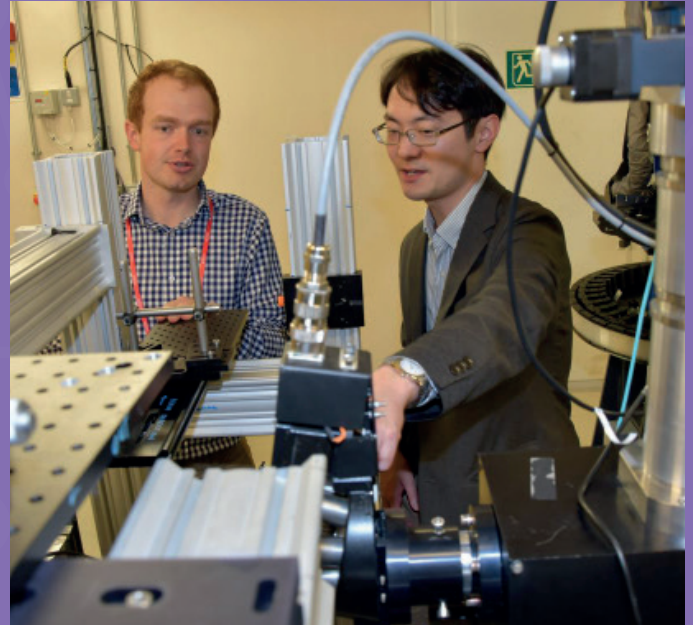
Case study

National Nuclear User Facility funding

Multidisciplinary teams were identified and assembled to capitalise on this major funding opportunity, to provide the UK nuclear R&D community with better equipment for decommissioning and innovation research.

Two bids were successful: NNUF-EXACT is led by the University of Southampton & NNUF-Hot Robotics is led by the University of Bristol.

The Hub Identified complimentary research capabilities to create powerful consortia, and provided support for scoping and writing the bids, as well as sourcing letters of support.



“The support of the Hub was vital in getting the news of this research out quickly. The Hub’s facilities and help have enabled nuclear stakeholders, politicians and the public to hear the important messages, directly from the researchers or via the media coverage that followed.”

**Professor Philip Thomas,
University of Bristol**

Research Themes

We have ten themes organised around industrially focused challenges, reflecting the interdisciplinary nature of our research.

Our themes are:

- Nuclear materials and modelling
- Structural Integrity
- Robotics
- Structural Engineering
- Monitoring
- Systems Risk, Reliability, Security and Resilience
- New Materials Development
- Nuclear Hazards and Risks
- Waste and Fuel Management
- Digital Engineering

Fee Structure

There are two options for Applied Research membership:

£20,000 maximum per year ‘Programme Management Fees’ attached incrementally to research projects

or

Discounted to a £10,000 flat rate annual membership fee, if agreed to pay yearly upfront.

Join our research network



"We are accelerating and growing nuclear research and teaching activities in the South West region. Joining our alliance will help to secure a long-term research and innovation pipeline for the good of the industry."

**Professor Tom Scott, Director (Science)
of the South West Nuclear Hub**



"The Hub brings together a unique pool of specialist talent and expertise that can be tapped into by industry; in turn industry helps us to ensure that our education and research stays at the cutting edge and has a positive impact on society."

**Professor Mahmoud Mostafavi, Director (Engineering) of the
South West Nuclear Hub**

Key contacts for further information

The Hub provides an efficient point of connectivity to the nuclear academic capability across the South West region. Please contact the South West Nuclear Hub Engagement Team for further information

E enquiries@southwestnuclearhub.ac.uk

W southwestnuclearhub.ac.uk

Twitter [@SWNuclearHub](https://twitter.com/SWNuclearHub)

LinkedIn [South West Nuclear Hub](https://www.linkedin.com/company/south-west-nuclear-hub)

For case studies of our applied research and innovation see:
southwestnuclearhub.ac.uk/category/case-studies

Current Applied Research Members

The South West nuclear industry is a premier destination for investment, innovation and growth. By joining our network your organisation can engage in active research, innovation, teaching or engagement projects with us.



cavendish
nuclear

IDOM

Current Academic Members

Together this alliance of Universities is actively pursuing collaborative opportunities in the UK and internationally and securing a long-term research and innovation pipeline by continuing to grow its strategic relationships. Current members include:



UNIVERSITY OF
Southampton



UNIVERSITY OF
PLYMOUTH



**SOUTH WEST
NUCLEAR HUB**