



University of
BRISTOL



SOUTH WEST
NUCLEAR HUB

Innovation Network Membership



southwestnuclearhub.ac.uk

Spot quadruped robot being deployed for radiation mapping

Innovation Membership Benefits

INNOVATION



The South West Nuclear Hub is helping to realise the zero-carbon economy of the future. Our alliance of academic, industrial and governmental institutions in the South West is pursuing research, innovation and skills in support of nuclear energy for electricity and other high-value products such as heat and hydrogen.

Benefits are aligned to our four strategic pillars:

Innovation

ACCESS TO EXPERTISE

- Development of product/offer through access to industrial challenge owners
- Enhanced opportunity to deploy products with experienced collaborators in the nuclear supply chain
- Business Development & market intelligence through access to networks e.g. Nuclear South West and Hinkley Point C supply chain team

Research

ENHANCED FUNDING

- Identification and access to new sources of funding

INCREASED IMPACT

- Effective consortia curation, including new and established capability from academic, industrial, government and SME partners

EXPERT ACCESS

- Development product/offer through access to academic expertise

People

SKILLS DEVELOPMENT

- Improved personal/employee knowledge of the nuclear sector

TALENT POOL ACCESS

- Engage undergraduate and postgraduate students from an internationally recognised region for nuclear skills provision (e.g. through projects, bursaries, careers days)

Engagement

HUB ALLIANCE ACCESS

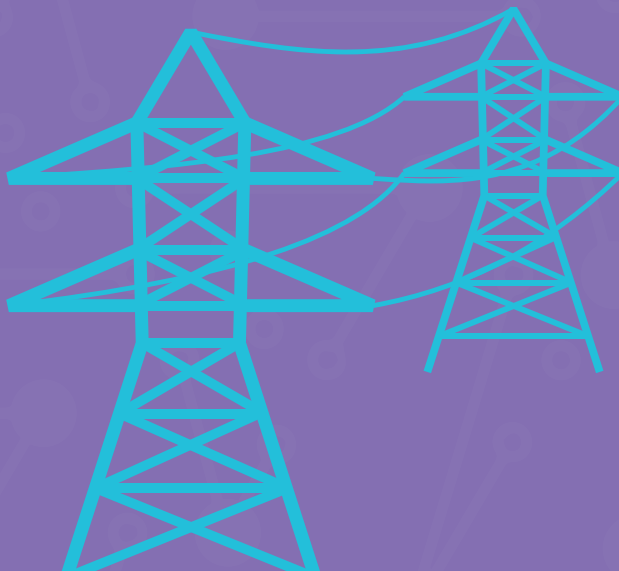
- Portal to academic expertise, the nuclear sector and beyond
- Participate in workshops by invitation
- Observe Hub Members Steering Board by invitation

PROMOTION

- Through our collaborative communications programme - co-ordinate activities to increase public awareness of STEM and nuclear issues

ADVICE

- Government nuclear sector policy - insight



Membership of the South West Nuclear Hub



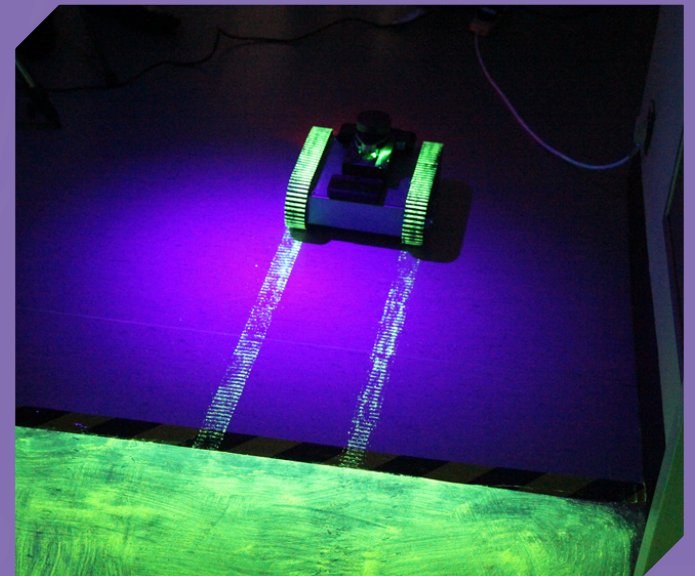
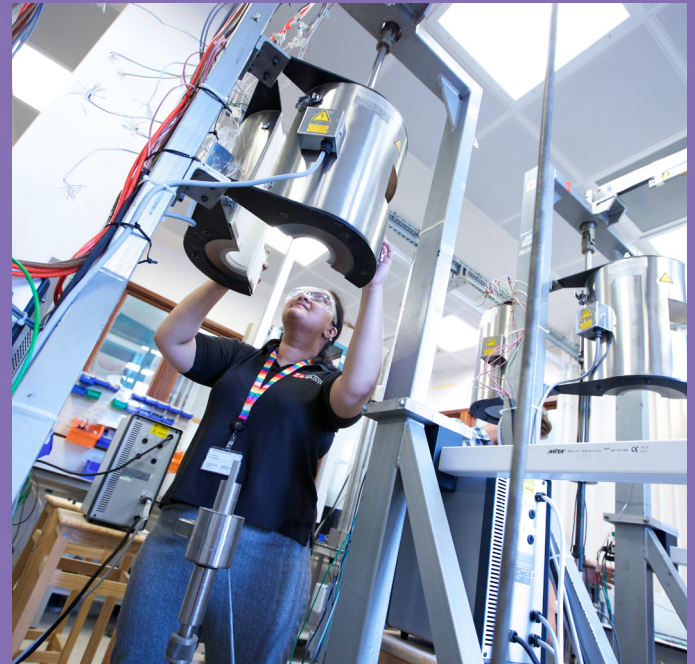
Case study

Nuclear South West Showcase and Conference

We led the technology exhibition element of the Nuclear South West Showcase 2019, part of an annual event that brings together over 100 people from the region's sector and beyond.

For this one-day showcase we curated an invited selection of experts across several disciplines including robotics, radiation detection, non-destructive testing and materials analysis, aligning with prominent industry challenges in the region.

This provided a platform for University spin-out companies such as Inductosense and ImiTec to connect with potential new collaborators and generate opportunities for innovation.



Research Themes

We have ten themes organised around industrially focused challenges, reflecting the interdisciplinary nature of our research.

Our themes are:

- Nuclear materials and modelling
- Structural Integrity
- Robotics
- Structural Engineering
- Monitoring
- Systems Risk, Reliability, Security and Resilience
- New Materials Development
- Nuclear Hazards and Risks
- Waste and Fuel Management
- Digital Engineering

Fee Structure

There is no cost to join the Innovation Network, but proactive engagement is expected upon signing the agreement.

Members in this tier can progress into the Applied Research membership category when collaborative projects and deeper engagement are initiated. Here, members can choose an incremental, (capped) project-based fee or an upfront flat rate.

Join our research network



"We are accelerating and growing nuclear research and teaching activities in the South West region. Joining our alliance will help to secure a long-term research and innovation pipeline for the good of the industry."

**Professor Tom Scott, Director (Science)
of the South West Nuclear Hub**



"The Hub brings together a unique pool of specialist talent and expertise that can be tapped into by industry; in turn industry helps us to ensure that our education and research stays at the cutting edge and has a positive impact on society."

**Professor Mahmoud Mostafavi, Director (Engineering) of the
South West Nuclear Hub**

Key contacts for further information

The Hub provides an efficient point of connectivity to the nuclear academic capability across the South West region. Please contact the South West Nuclear Hub Engagement Team for further information

E enquiries@southwestnuclearhub.ac.uk

W southwestnuclearhub.ac.uk

Twitter [@SWNuclearHub](https://twitter.com/SWNuclearHub)

LinkedIn [South West Nuclear Hub](https://www.linkedin.com/company/south-west-nuclear-hub)

For case studies of our applied research and innovation see:
southwestnuclearhub.ac.uk/category/case-studies

Current Applied Research Members

The South West nuclear industry is a premier destination for investment, innovation and growth. By joining our network your organisation can engage in active research, innovation, teaching or engagement projects with us.



cavendish
nuclear

IDOM

Current Academic Members

Together this alliance of Universities is actively pursuing collaborative opportunities in the UK and internationally and securing a long-term research and innovation pipeline by continuing to grow its strategic relationships. Current members include:



UNIVERSITY OF
Southampton



UNIVERSITY OF
PLYMOUTH



**SOUTH WEST
NUCLEAR HUB**